


A hand with a silver ring is drawing a blue outline of a house on a white sheet of paper. Several other colorful markers (green, purple, yellow, red, blue) are scattered around the drawing. The background is blurred.

looking beyond

Disasters:

Young people building
community resilience



OUR team = Tal Fitzpatrick
Salvador Cantellano
Owen Novello
Hayley Low

What?



Online

Documentary Series

5 → 7 episodes

30 min each

Potentially
Funded by SBS

To be broadcast on Aust.

TV (+ hopefully in NZ + elsewhere)

Max

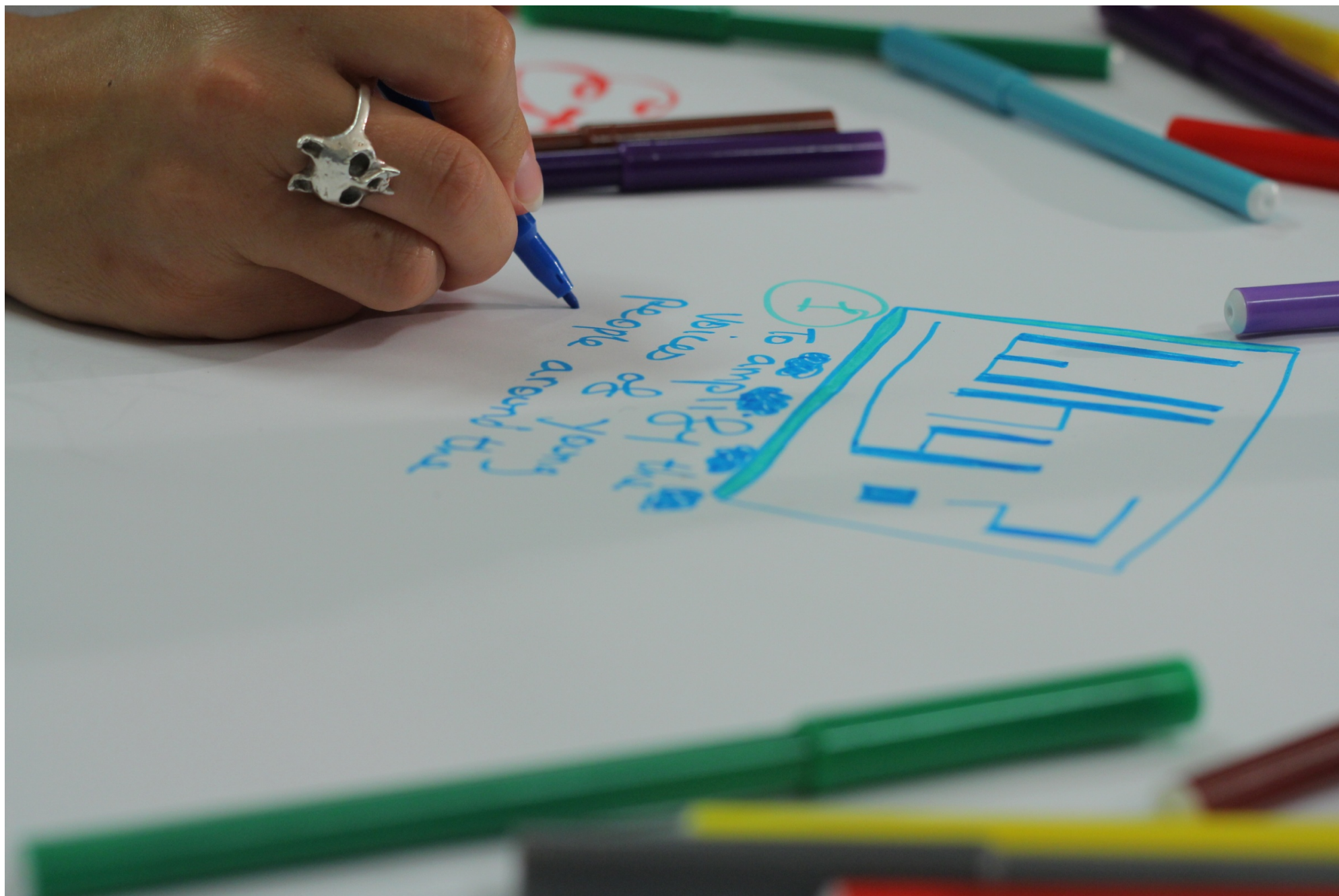
Hope

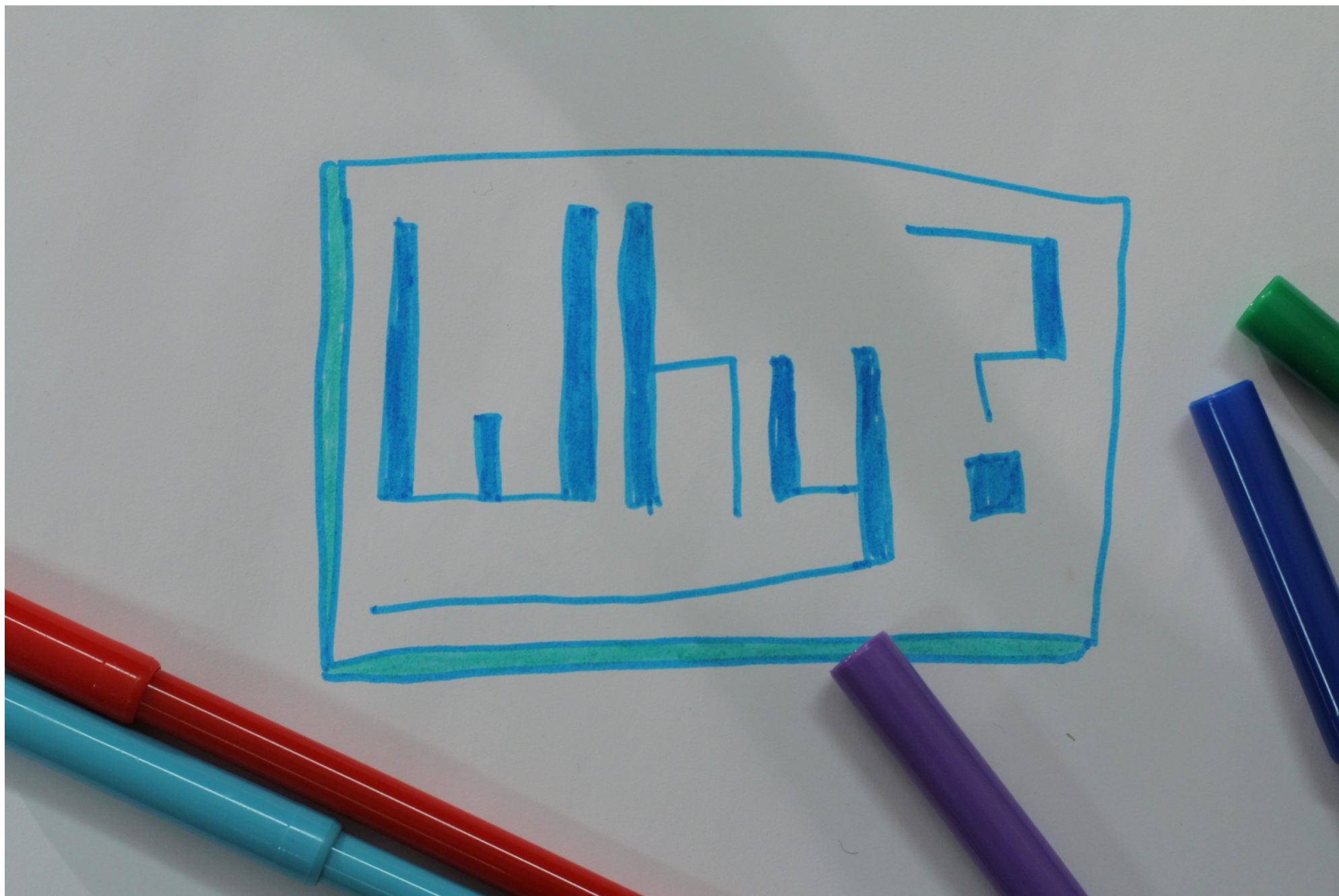
Tr (+ hopefully in NZ + elsewhere)
ABOUT

(SOME) **Participants OF THIS UNESCO
YOUTH FORUM.**

AND THE AMAZING WORK THEY ARE DOING
IN THEIR COMMUNITIES.

Focus ⇒ youth leadership
community resilience
Disaster preparedness





1 To amplify the
voices of young
people around the

(GLOBE)

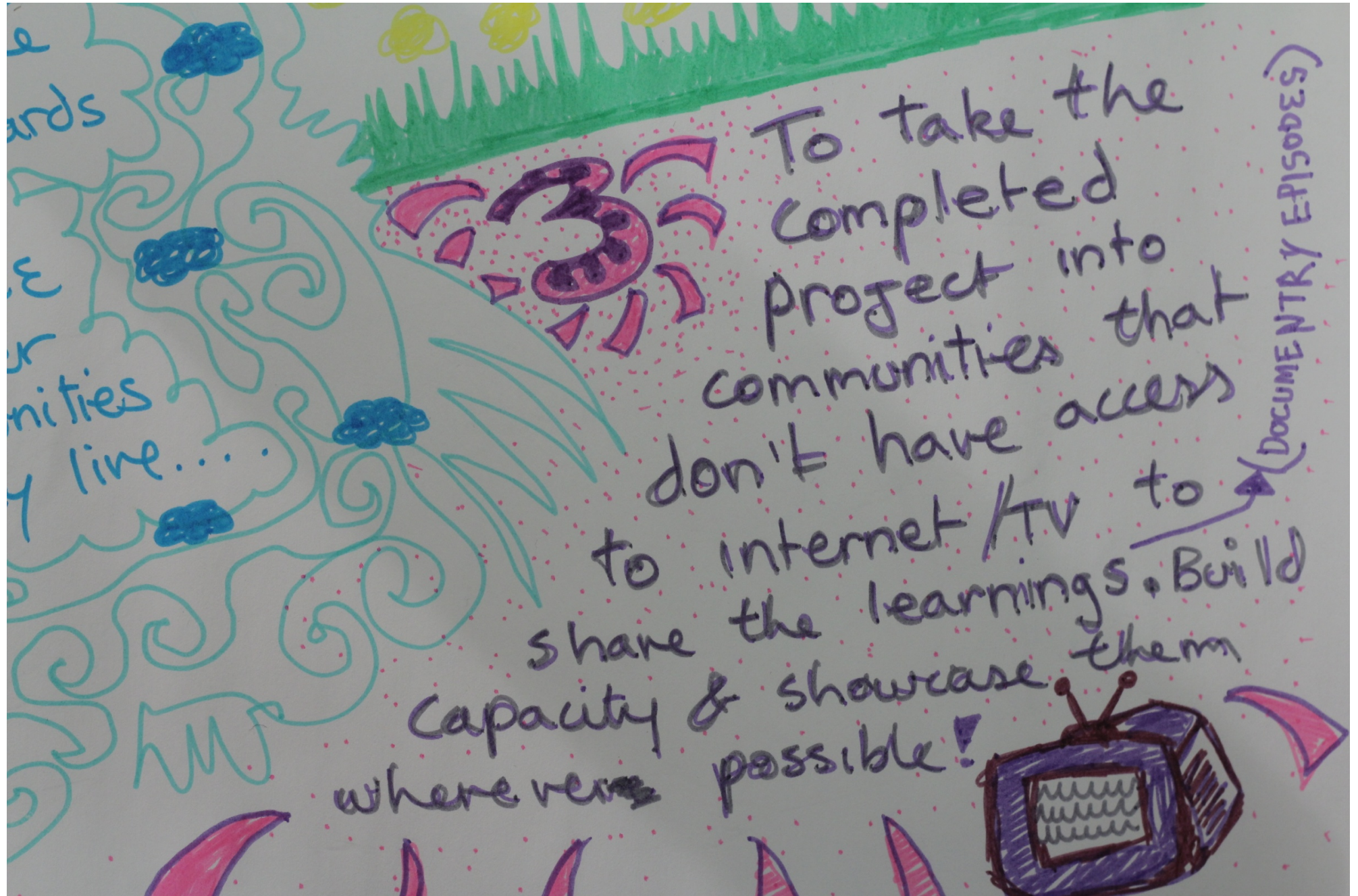


working towards

**BUILDING
RESILIENCE**

in the disaster
affected communities
in which they live....





ards

E

unities

live....

W

To take the
completed
project into
communities that
don't have access
to internet/TV to
share the learnings. Build
capacity & showcase them
where ever possible!

(DOCUMENTARY EPISODES)



Ethics

Ethics

- Authenticity
- Local involvement + ownership
- Improving access
- Building capacity in communities (particularly around resilience and disaster **PPRR**)

← Preparation / Prevention / Response
and Recovery.

affected comm
in which th

A close-up photograph of a person's hand drawing on a white surface, likely a whiteboard or a large sheet of paper. The hand is holding a green marker and is in the process of drawing a blue circle. Several other markers in various colors (purple, blue, red, yellow, green) are scattered around the drawing area. The background is slightly blurred, showing more of the white surface and some faint markings.

Thanks!

Tal.fitzpatrick@gmail.com