

# **Volunteer Group Foundation for Students and Collaboration with Kobe RMC: An Action Plan**

**Hirota Ka Koike**  
Kobe university  
Faculty of law  
[k.hirotaka.world@gmail.com](mailto:k.hirotaka.world@gmail.com)

**Mizan B. F. Bisri**  
Kobe University  
Graduate School of International Cooperation Studies  
[mizan.bf.bisri@gmail.com](mailto:mizan.bf.bisri@gmail.com)



# Background

*Students have a lot of time.  
But don't have money,  
and enough support*



So many Student Volunteer use their own money  
that they earn as part-time-job.

# What Can We Do?

- Deepen our knowledge of Risk Analysis and Management (*eg. Special lectures*)
- Share creative and various ideas and thoughts about the risks (*eg. Discussion, Network with other university*)
- Practice in our daily life, volunteering in disaster risk reduction (*eg. Outside-school activities*)

# HIROTAKA'S ORIGINAL PLAN

- Create a new Volunteer foundation for students (Get 20 core members)
- Hold a event about DDR, Volunteering, and so on, to earn money.
- Do fund raising to inform the need “Immediately Volunteer” and ask them to donate.

# MIZAN'S SITUATION & PLAN

- Just started a new student-based group on risk and disaster management (Kobe RMC)
- Had a project / event on DRR “FRIENDS in Kobe City (including Bousai Festival)” already endorsed and financially supported by Kobe City Government
- In need for additional core members for the event and organizational development

# Our Objective

**“Young people“ should perform the leading role for volunteering.**

**We encourage more young people to join the Volunteer activities.**



**We will collaborate: Hirotaka (and friends) will join as core member of Kobe RMC 😊**



# KOBE RMC

## WHO WE ARE & WHY ARE WE DOING THIS?

- 1) Student-based community
- 2) This is Kobe!
- 3) “Disaster strike when we forget”
- 4) Disasters are becoming more deadly, costly, and complex, BUT ...



神戸リスクマネジメントコミュニティ (Kobe RMC)

# TIMELINE

- ASAP To Create a new group → DONE, will join Kobe RMC
- Organize Initial event → Yes, on October 2013 to March 2014: “FRIENDS in Kobe City” → Bousai Festival: Town Watching, Cross Road Game, Bousai Duck demonstration; Risk Awareness Material Production
- March – July 2014  
to hold an event to promote goods & fund raising
- Next summer (August - September 2014)  
DRR and Disaster Response volunteer in Japan or Abroad



# ACTION PLAN WITH KOBE RMC

## FRIENDS IN KOBE CITY

[Foreign Resident's Risk Perception and Disaster Preparedness in Kobe City]

**“RAISE YOUR AWARENESS, SAVE YOUR LIFE!”**

(An initiative by Kobe RMC and supported by Kobe City Government)



**Town Watching, Disaster Preparedness for Foreign Residents (esp. students) via Bousai Festival, Risk Awareness Video Production**

# ACTION PLAN WITH KOBE RMC



外国人留学生在神戸にいる間にその利点を生かし、防災・減災に関する知識を学ぶことで、帰国してからもそれらを生かすことができるようになること。



外国人留學生と日本人學生が共に活動する場を設け、得られた留學生のフィードバックを神戸市に提供することができること。



外国人向けの防災・減災啓発教材を開発することができること。



彼らの防災対策の向上につながること。

# **PLAN FOR NETWORKING**

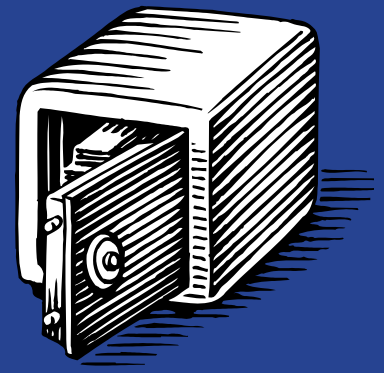
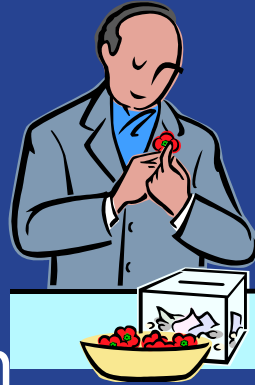
**Collaborate with SVA of Christchurch, New Zealand.**

**Collaborate with some Volunteer Groups in Japan:  
e.g. KIDS of Kyoto University, WASEND of Waseda University, LAN of Hyogo University, Cherits of Ritsumeikan University, Youth Looking Beyond Disaster (LBD), Bandung Disaster Study Group (Indonesia), Groups we met at LBD3, and many more**

**To carry out the volunteer study with each other and learn lessons on how to maintain volunteer spirit.**

# BUDGET

- Budget for initial event “Bousai festival of FRIENDS in Kobe City” already secured from Kobe City government.
- Estimated budget (based on previous experiences) for disaster volunteer in affected areas is about 60,000 yen/trip/person (in Japan) and about 150,000 yen/trip/person (international volunteer in Southeast Asia) will be covered through
  - From selling goods made in “Disaster Area”.
  - Fund raising from donors / company
  - Holding events with a fee
  - Crowd funding



# OUTPUT IMAGE

- Simply put,  
“Change the Image of Volunteer and risk management study in Japan”
- A lot of young people will join in the Volunteer Activities.

# CONTACT INFORMATION

Hiroataka Koike (小池宏隆)

k.hiroataka.world@gmail.com

+81-90-2578-4563

Find me on Facebook | Line

Mizan B. F. BISRI (ミザン ビスリ)

*Knowledge Manager* – Kobe RMC, Japan

+81-80-4498-1087/+62-817-0202-491

mizan.bf.bisri@pl.itb.ac.id / mizan.bf.bisri@gmail.com

Find me on FB | Line | LinkedIn | Twitter:@mizanbisri